

# Retail - Office - Medical Space for Lease

1140 Central Park Plaza - Suite 104, O'Fallon, IL 62269



2,730 SF Available \$29.00 PSF NNN

- High Profile Location on Central Park Plaza at signalized intersection
- Surrounding users include Starbucks, Drake's, Drury Inn, Fairfield Inn, Menards, Five Guys, Taco Bell, Discount Tire, Navy Federal Credit Union, Massage Envy, Aroy Thai
- Marquee Signage available on Interstate 64 and Monument sign on Green Mount Road
- 55 Parking Spaces; 5.6 per 1,000
- Traffic Counts 18,000 VPD on Central Park Drive, 27,500 on Green Mount Road and 64,900 on I-64

**David Wittenauer** | President  
Designated Managing Broker  
david@wittenauerproperties.com  
Office: 618-632-5850  
Mobile: 618-719-1197

Dogwood  
Social  
House



Subject Property



Menards

**DRAKE'S**  
Come play



54<sup>TH</sup>  
STREET



**FIVE GUYS**



CENTRAL PARK DR



**POPEYES**



GREEN MOUNT RD



Frank Park Parkway



FRANK SCOTT PKWY

# Retail - Office - Medical Space for Lease

1140 Central Park Plaza - Suite 104, O'Fallon, IL 62269



2,730 SF Available - \$29.00 PSF NNN

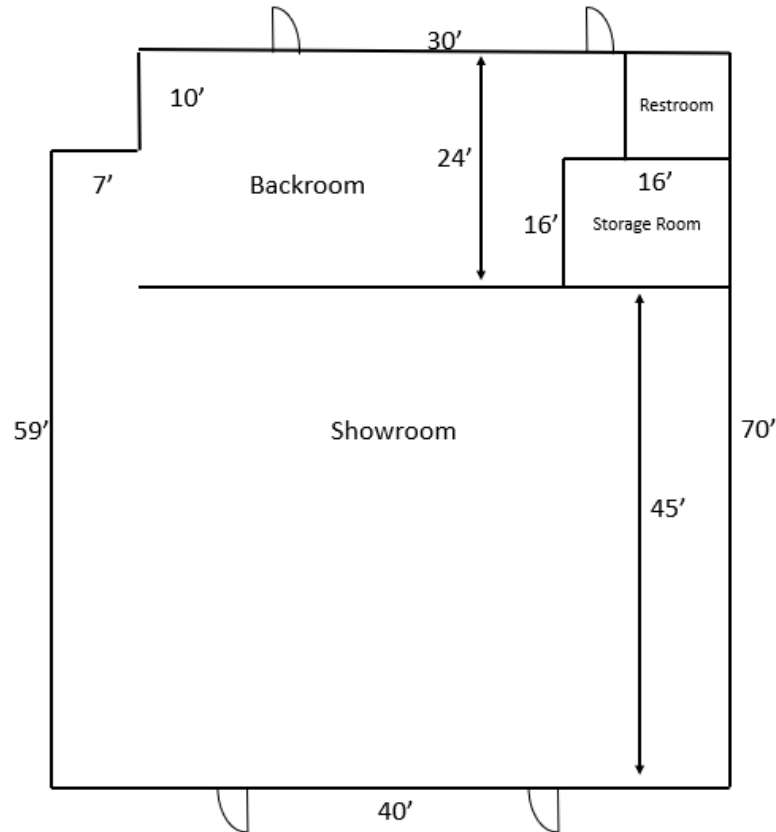
**WP** | WITTENAUER  
PROPERTIES

**David Wittenauer** | President  
Designated Managing Broker  
1177 N. Green Mount Rd, Suite 201, O'Fallon, IL 62269  
Office: 618.632.5850 | Fax: 618.632.3270  
Email: [info@wittenauerproperties.com](mailto:info@wittenauerproperties.com)  
[www.wittenauerproperties.com](http://www.wittenauerproperties.com)

# Retail - Office - Medical Space for Lease

1140 Central Park Plaza - Suite 104, O'Fallon, IL 62269

Current Floorplan



ALL dimensions are approximate and should be verified by Tenant.

2,730 SF Available - \$29.00 PSF NNN

**WP** | WITTENAUER  
PROPERTIES

**David Wittenuer** | President  
Designated Managing Broker

1177 N. Green Mount Rd, Suite 201, O'Fallon, IL 62269

Office: 618.632.5850 | Fax: 618.632.3270

Email: [info@wittenauerproperties.com](mailto:info@wittenauerproperties.com)

[www.wittenauerproperties.com](http://www.wittenauerproperties.com)